

# Model: H 500 Active Air

## Commercial Pass Through Self Venting Dish Washer



### Product Advantages



#### Mike-1

Fully electronic control with integrated infrared technology



#### Delicate Wash Protection

Soft-start feature starts the wash pump slowly and gradually builds water pressure, protecting glassware from shifting or breaking



#### Optimal Wash Performance

Powerful stainless steel upper and lower rotating wash and rinse systems.

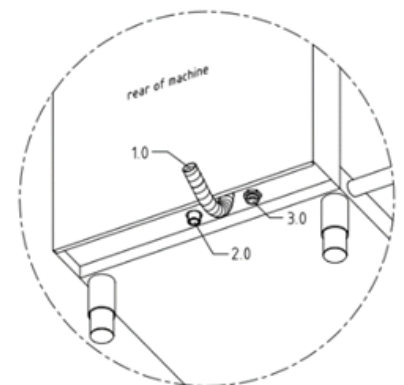
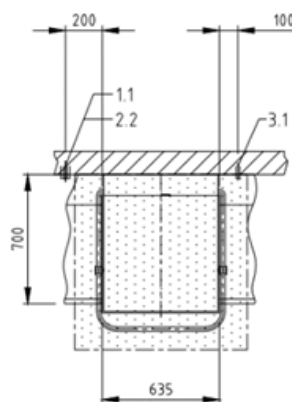
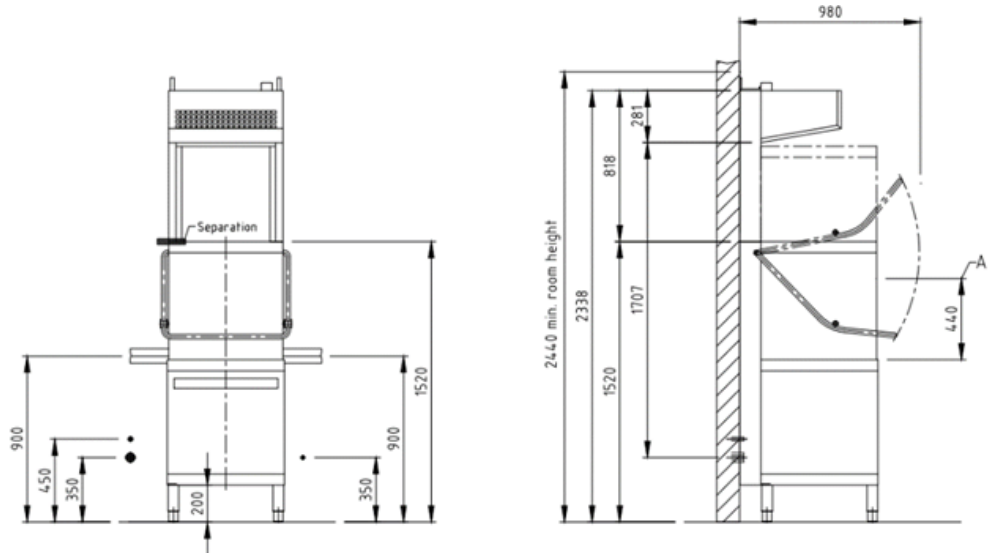
### Original Eco Filter System

Provides exceptional cleaning results thanks to wash water filtration with dirt removal capabilities and optimal tank water regeneration

## Technical Data

Water consumption L/basket	3.0
Basket dimensions in mm	500 x 500
* Program Cycles in seconds	90/150/240
1.0 Drain hose connection Pump out drain	Hose 3/4"
1.1 Drain max. 700mm above floor level	DN 50
2.0 Water connection point	DN 20
2.1 Water supply	Hot Water Supply 53.4 ppm water hardness 250-500Kpa flow
3.0 Power connection	Lead 1400mm long
3.1 Power Supply	3NPE 400V 50Hz, 8.5Kw 17.2A

## Drawing Dimensions



\* For connection to cold water and/or short basket exchange times, the wash cycles may increase to achieve hygienic final rinse temperatures

### Active Air

Active Air system, eliminates exhaust vapours escaping from the machine when the hood is raised, removing the need for an exhaust canopy. Subject to local requirements.

### Heat Is Retained In The Machine

Double wall construction, saves energy and reduces operating costs

### ✓ Perfect Results Every Time

Equipped with rinse and drain pumps as standard features

### ✓ Easy To Clean

Self-clean cycle for easy, hygienic cleaning of the wash chamber

### ✓ Ideal For Tall Dishware

440mm entry height

### ✓ Ready To Install

Supplied with fill and drain hoses. Electrical cable, detergent